

2' W x 3' H
entrance to the
Side Tunnel.

Close-up
(below)

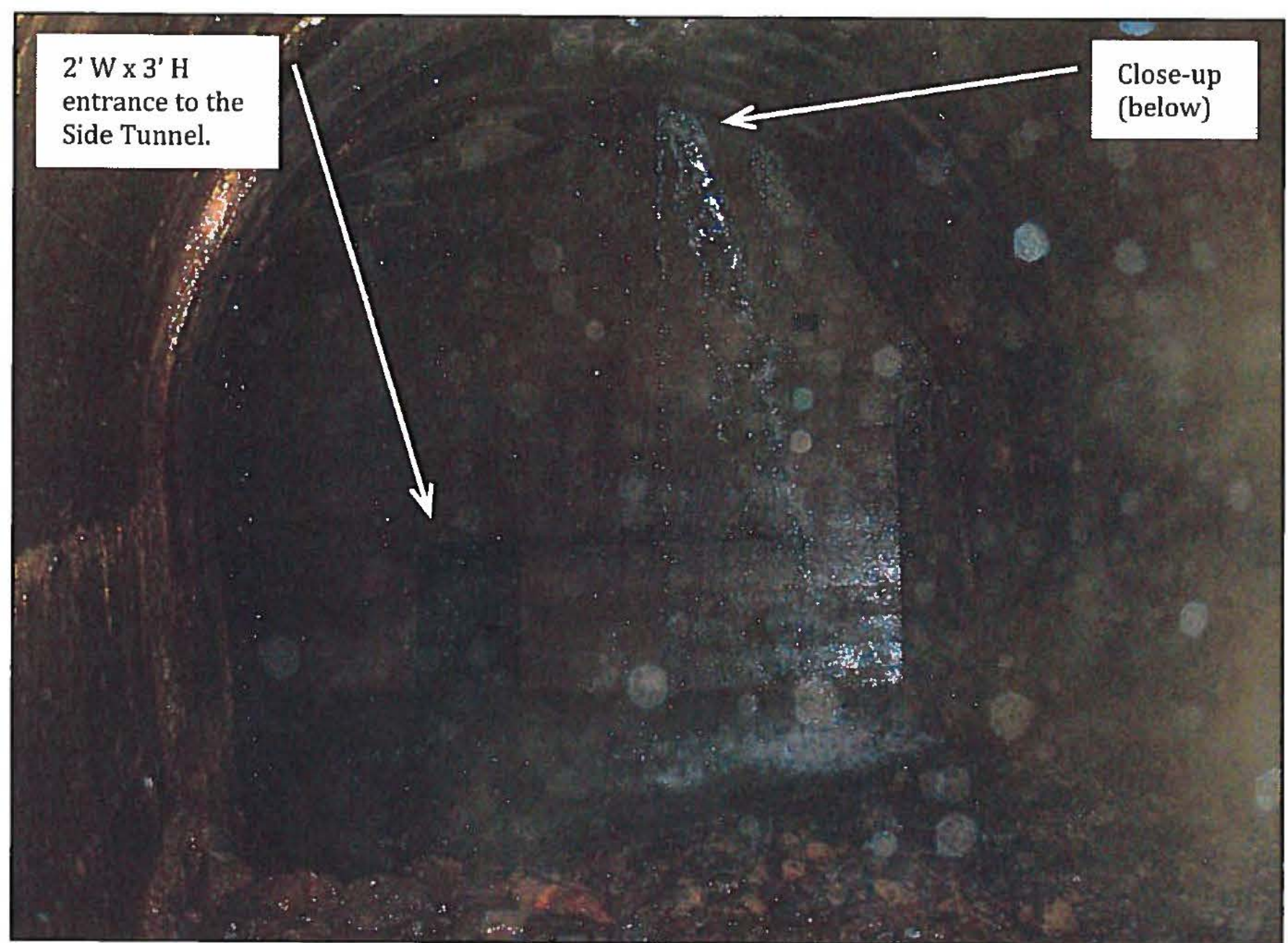


Photo 5 - View from inside the Side Tunnel looking west toward the Main Tunnel's formed concrete outside wall. The Main Tunnel extends upstream (photo right) another \pm 30 feet before bending eastward to approach the gate tower (See Figure 1).

Concrete

IDWR-(12-4-2013)

Concrete



Photo 6 - Substantial leakage occurs at the Side Tunnel connection with the Main Tunnel.